

SPECIFICATIONS:

CONTACT RATING: Refer to "Contact Material Options" for more info.

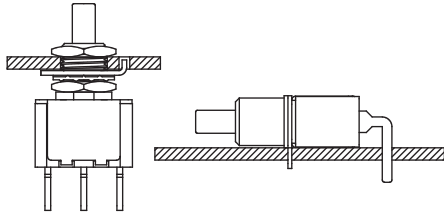
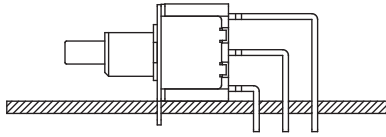
ELECTRICAL LIFE: 50,000 make and break cycles at full load.

CONTACT RESISTANCE: 10mΩ max. initial @ 2-4 VDC.

INSULATION RESISTANCE: 1,000 MΩ min.

DIELECTRIC STRENGTH: 1,500V RMS @ sea level.

OPERATION TEMPERATURE: -30°C TO +85°C.



MATERIALS:

CASE: Diallyl phthalate(DAP)(UL 94V-0).

PLUNGER: PBT or FR52 (UL 94V-0).

BUSHING: Brass, nickel plated.

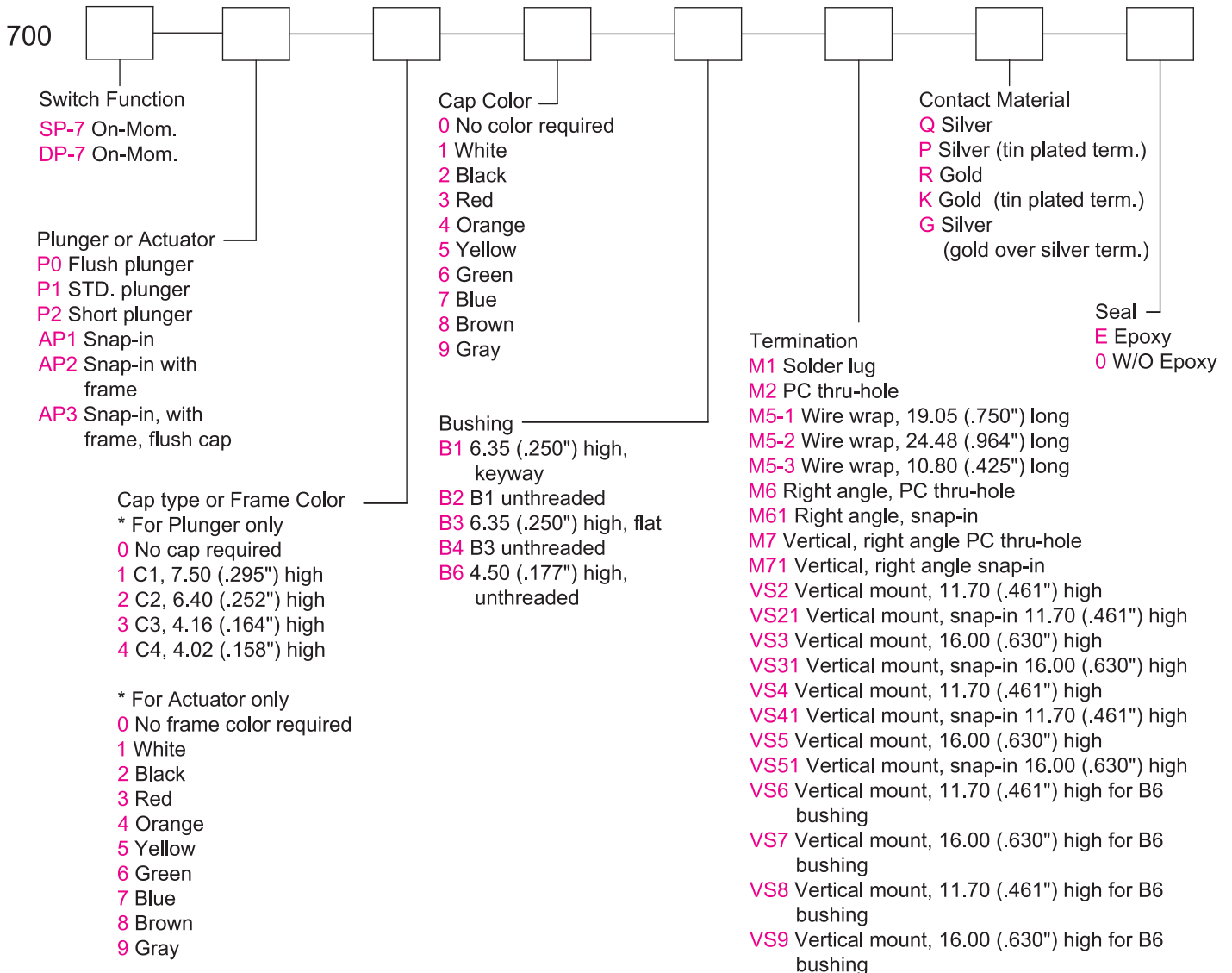
HOUSING: Stainless steel.

TERMINAL SEAL: Epoxy.

Specifications and Dimensions subject to change

If your preferred product configuration is not shown, please contact our sales representative for custom design.

HOW TO ORDER SYSTEM



Series 700

Snap-Acting Pushbutton Switches

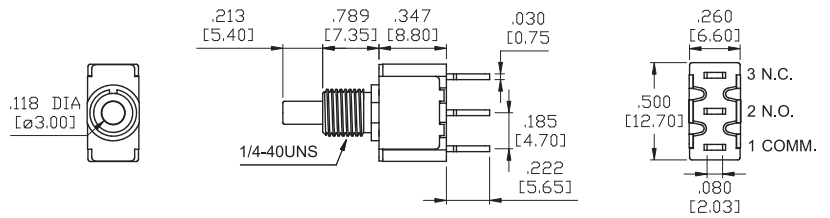
Toggle
Rocker
Slide
Pushbutton
AV
Rotary
Tact
Touch Key
Miscellaneous

SPDT



Model No.	Type	
SP-7	ON	MOM
Term. Comm.	1-3	1-2

Schematic

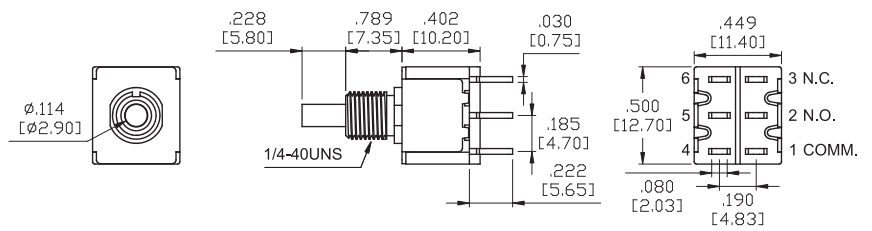
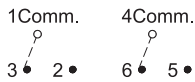


DPDT



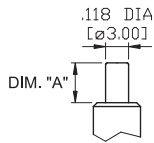
Model No.	Type	
DP-7	ON	MOM
Term. Comm.	1-3,4-6	1-2,4-5

Schematic



PLUNGER OPTIONS

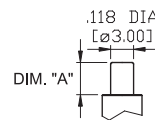
FOR B1,B2,B3,B4 ONLY



OPTION CODE	DIM. "A"
P0	.000 [0.00]
P1	.213 [5.40]
P2	.091 [2.30]

* Plunger length shown with SPDT model.

FOR B6 ONLY

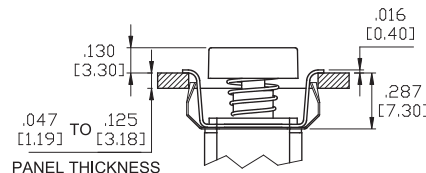
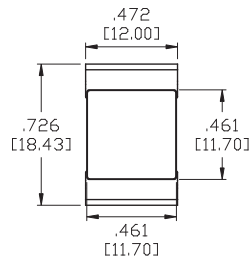
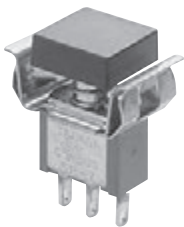


OPTION CODE	DIM. "A"
P1	.157 [4.00]
P2	.106 [2.70]

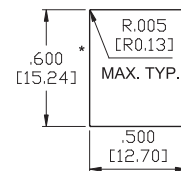
* Plunger length shown with SPDT model.

ACTUATOR OPTIONS FOR SNAP-IN FRONT MOUNT

AP1

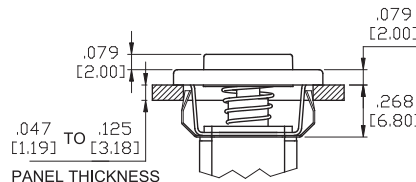
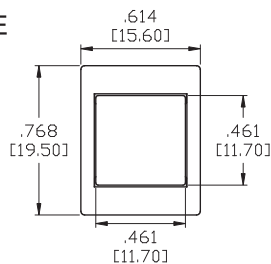
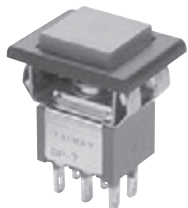


PANEL MOUNTING

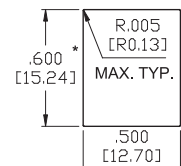


* Increase this dimension to .620/.625 [15.75/15.88] for .091/.125 [2.31/3.18] thk. panels.

AP2 WITH FRAME

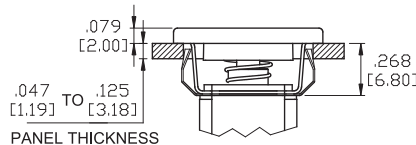
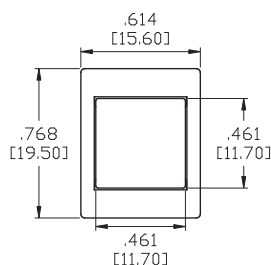


PANEL MOUNTING



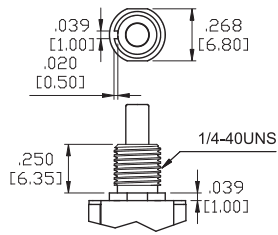
* Increase this dimension to .620/.625 [15.75/15.88] for .091/.125 [2.31/3.18] thk. panels.

AP3 FLUSH CAP

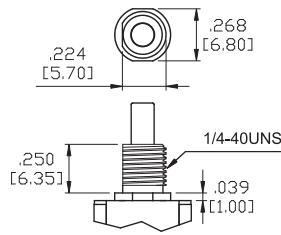


BUSHING OPTIONS

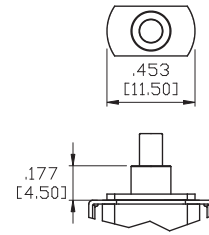
B1 THD STD
B2 NON-THD



B3 THD STD
B4 NON-THD

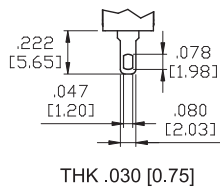


B6 NON-THD
(FOR TERMINATION OPTIONS VS6-VS9 ONLY)

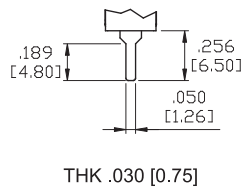


TERMINATION OPTIONS

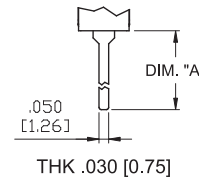
M1 STD. SOLDER LUG



M2 PC THRU-HOLE

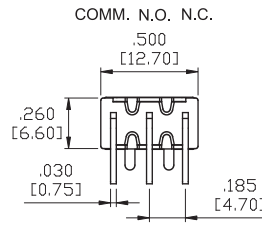
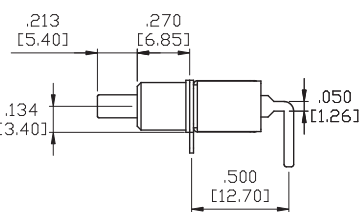
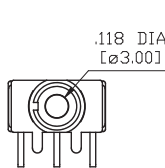


M5 WIRE WRAP

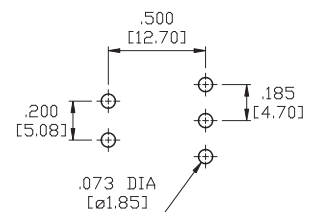


OPTION CODE	DIM. "A"
M5-1	.750 [19.05]
M5-2	.964 [24.48]
M5-3	.425 [10.80]

M6

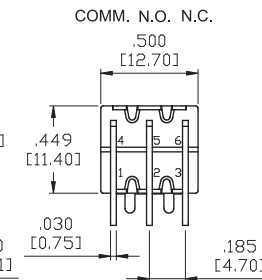
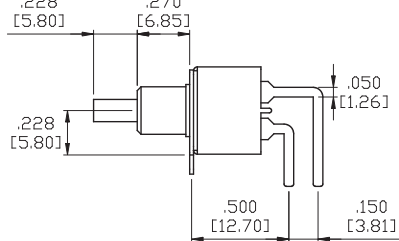
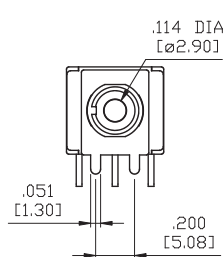
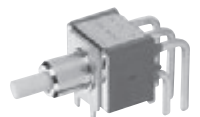


P.C.MOUNTING

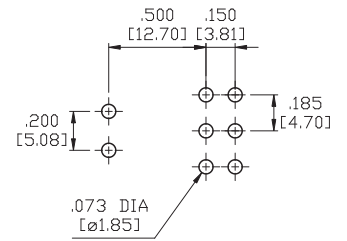


SPDT

M6

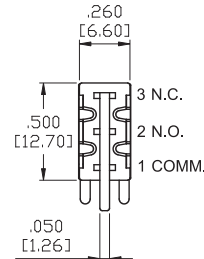
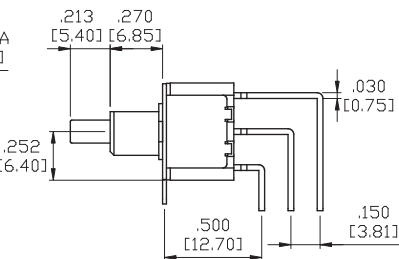
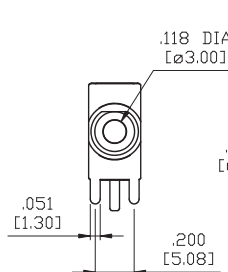
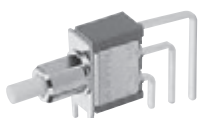


P.C.MOUNTING

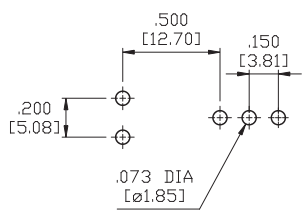


DPDT

M7



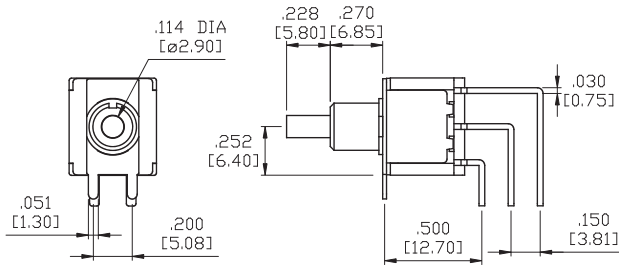
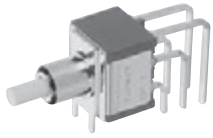
P.C.MOUNTING



SPDT

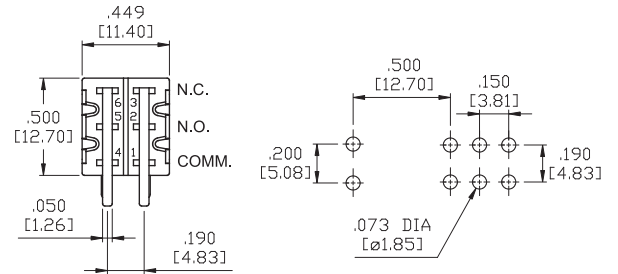
TERMINATION OPTIONS

M7

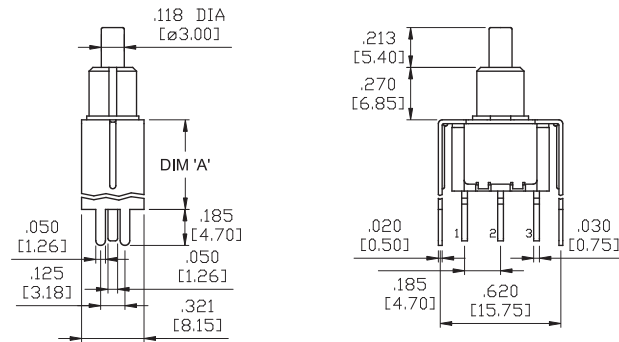
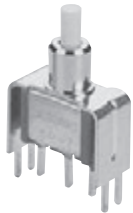


DPDT

P.C.MOUNTING

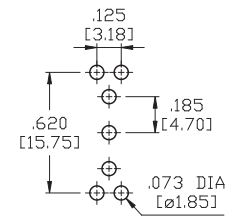


VS2-VS3



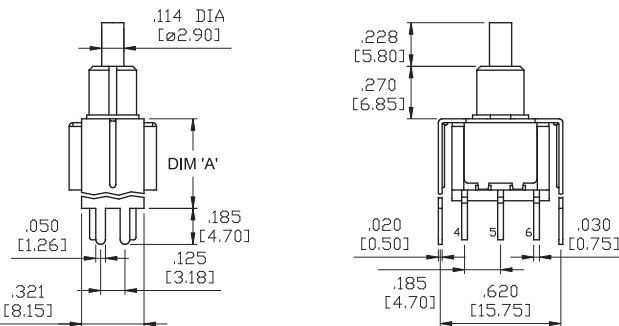
SPDT

P.C.MOUNTING



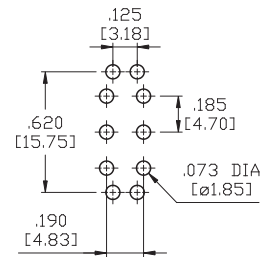
OPTION CODE	DIM.'A'
VS2	.461 [11.70]
VS3	.630 [16.00]

VS2-VS3



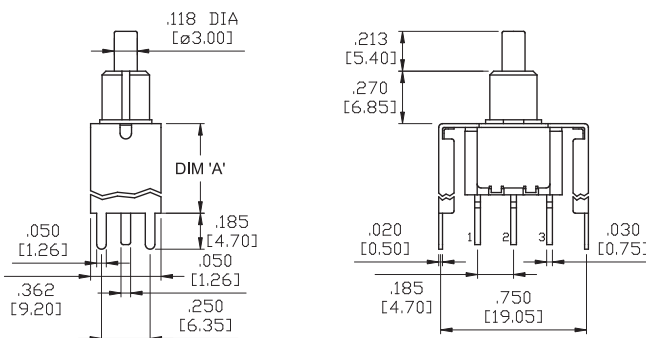
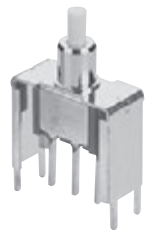
DPDT

P.C.MOUNTING



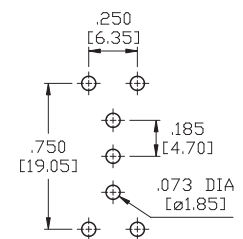
OPTION CODE	DIM.'A'
VS2	.461 [11.70]
VS3	.630 [16.00]

VS4-VS5



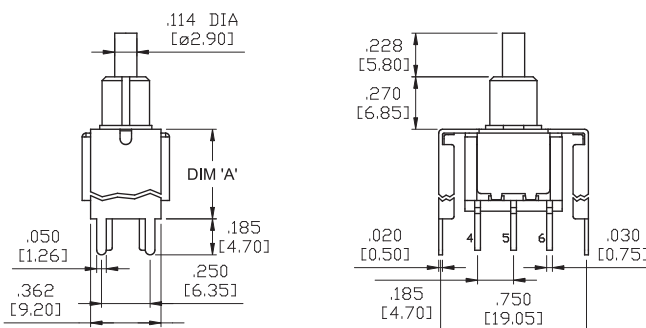
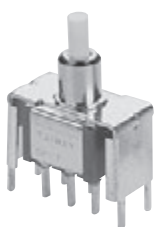
SPDT

P.C.MOUNTING



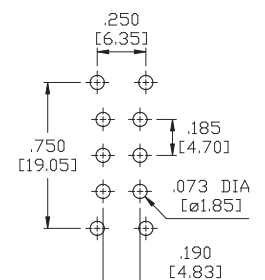
OPTION CODE	DIM.'A'
VS4	.461 [11.70]
VS5	.630 [16.00]

VS4-VS5



DPDT

P.C.MOUNTING



OPTION CODE	DIM.'A'
VS4	.461 [11.70]
VS5	.630 [16.00]

Toggle

Rocker

Slide

Pushbutton

AV

Rotary

Tact

Touch Key

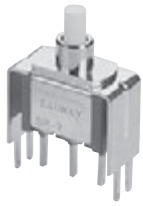
Miscellaneous

TERMINATION OPTIONS

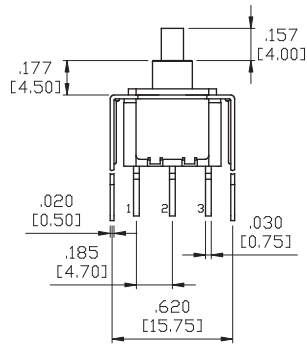
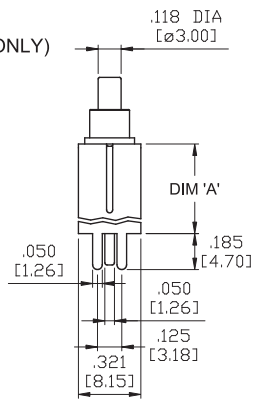
P.C.MOUNTING

VS6-VS7

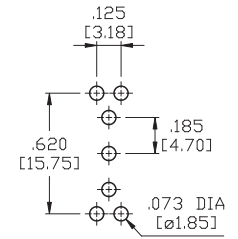
(FOR B6 BUSHING ONLY)



SPDT



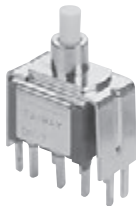
OPTION CODE	DIM.'A'
VS6	.461 [11.70]
VS7	.630 [16.00]



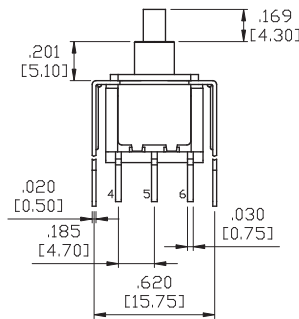
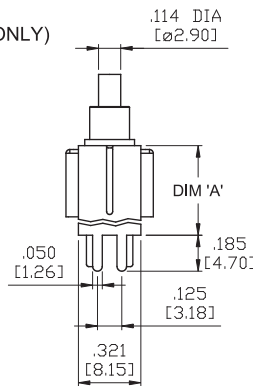
P.C.MOUNTING

VS6-VS7

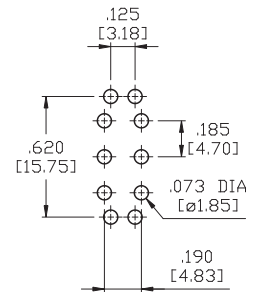
(FOR B6 BUSHING ONLY)



DPDT



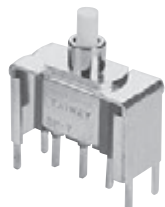
OPTION CODE	DIM.'A'
VS6	.461 [11.70]
VS7	.630 [16.00]



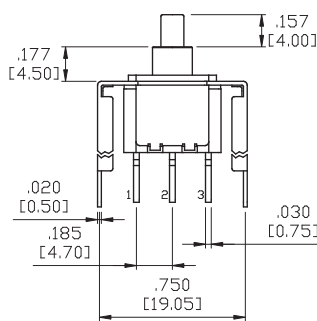
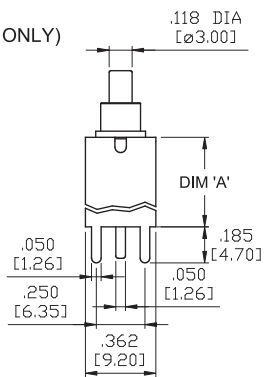
P.C.MOUNTING

VS8-VS9

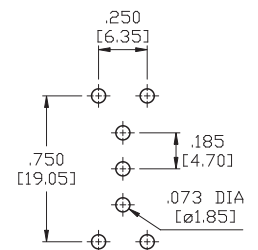
(FOR B6 BUSHING ONLY)



SPDT



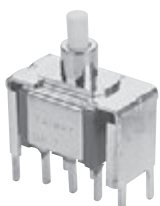
OPTION CODE	DIM.'A'
VS8	.461 [11.70]
VS9	.630 [16.00]



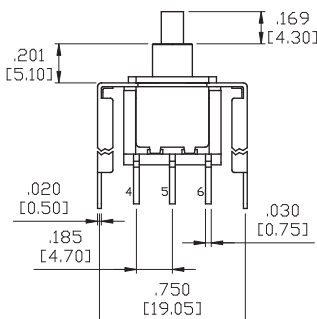
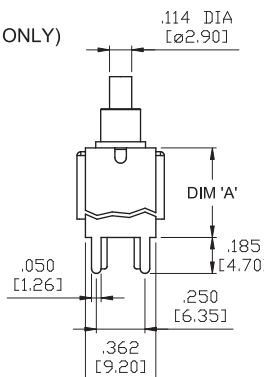
P.C.MOUNTING

VS8-VS9

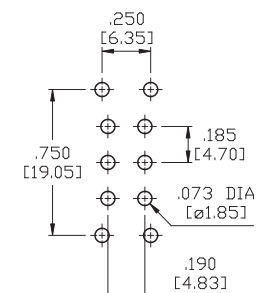
(FOR B6 BUSHING ONLY)



DPDT

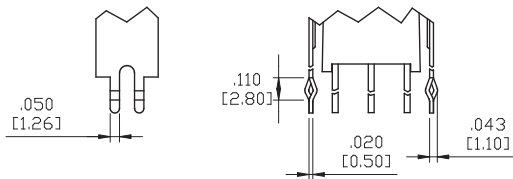


OPTION CODE	DIM.'A'
VS8	.461 [11.70]
VS9	.630 [16.00]

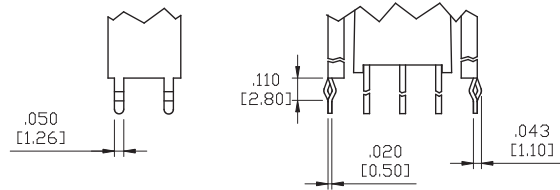


SNAP-IN TERMINATION OPTIONS

VS21,VS31



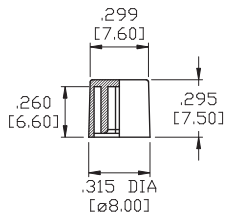
VS41,VS51



* PC Mounting for VS21,VS31,VS41,VS51 refer to VS2,VS3,VS4,VS5 respectively.

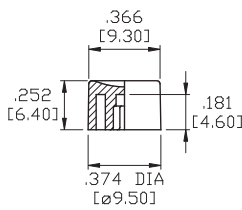
PLUNGER CAPS

C1



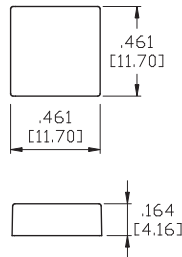
* MATERIAL: ABS.

C2



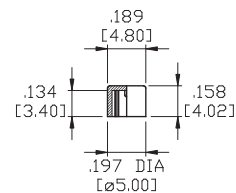
* MATERIAL: ABS.

C3



* MATERIAL: ABS.

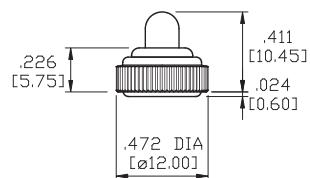
C4



* MATERIAL: ABS.

CAP AND FRAME COLORS	
1	White
2	Black
3	Red
4	Orange
5	Yellow
6	Green
7	Blue
8	Brown
9	Gray

E3 RUBBER HOOD



E3=INCH (STD.)
E3A=INCH WITH INTERNAL-ORING SEALED

* FOR P1 PLUNGER ONLY.

CONTACT MATERIAL OPTIONS

Coding	Contact Material	Terminal Plating	Rating	Agency Approvals
Q	Silver ¹	Silver plated ¹	1Amps @ 120VAC or 38VDC	
R	Gold ²	Gold plated ³	0.4VA max @ 20V max (AC or DC)	
G	Silver ¹	Gold over silver ⁴	1Amps @ 120VAC or 38VDC	

1. Movable Contact / Terminals: Copper alloy, silver plated.
2. Movable Contact: Copper alloy with gold plated over nickel plated.
3. Terminals: Copper alloy, with gold plated over nickel plated.
4. Terminals: Silver plated with outer layer in gold plating.