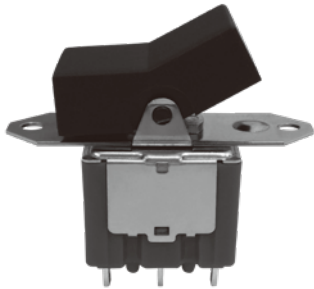


61058 Approved



**SPECIFICATIONS:**

CONTACT RATING: Refer to "Contact Material Options" for more info.  
 ELECTRICAL LIFE: 50,000 make-and-break cycles at full load.  
 CONTACT RESISTANCE: 10mΩ max. initial.  
 INSULATION RESISTANCE: 1,000MΩ min. @500VDC.  
 DIELECTRIC STRENGTHS: 2,000V RMS @ sea level.  
 OPERATING TEMPERATURE: -30°C to +85°C.

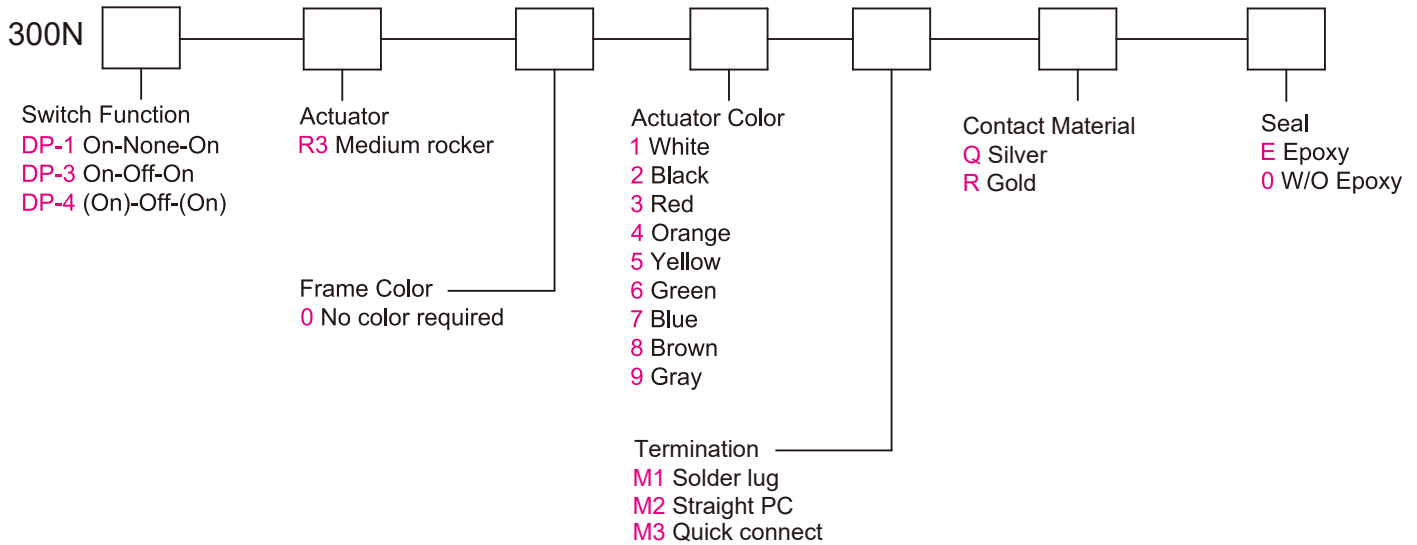
**MATERIALS:**

CASE: Diallyl phthalate(DAP)(UL 94V-0).  
 ROCKERS: Nylon 6/6 or ABS.  
 BUSHING: Zinc, nickel plated.  
 HOUSING: Stainless steel.  
 FRONT/REAR MOUNTING: Stainless steel.  
 SWITCH SUPPORT: Brass, tin plated.  
 TERMINAL SEAL: Epoxy.

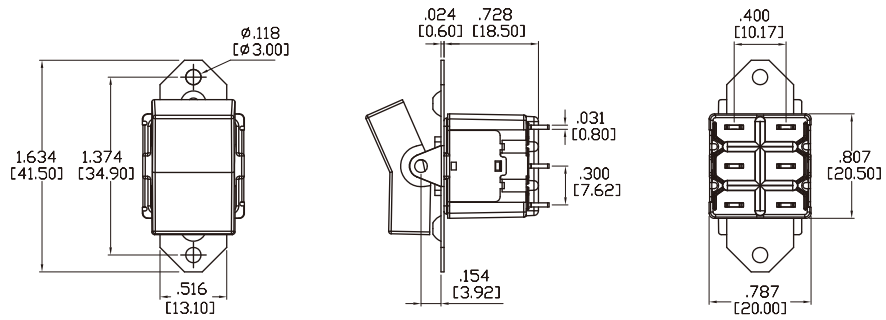
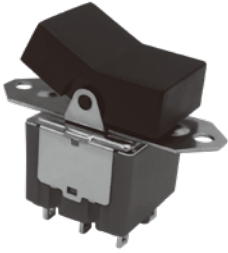
Specifications and Dimensions subject to change

If your preferred product configuration is not shown, please contact our sales representative for custom design.

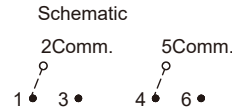
**HOW TO ORDER SYSTEM**



## DPDT

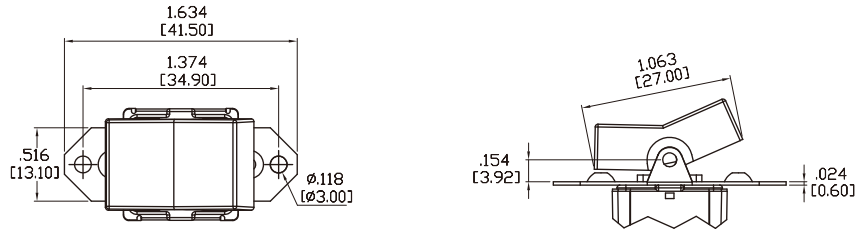


Model No.	Switching Position		
	ON	NONE	ON
DP-1	ON	OFF	ON
DP-3	(ON)	OFF	(ON)
Term. Comm.	2-3,5-6	OPEN	2-1,5-4



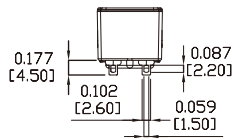
## ACTUATOR OPTIONS FOR PANEL REAR MOUNT

### R3



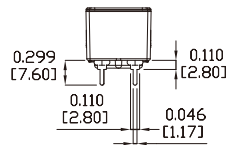
## TERMINATION OPTIONS

### M1 SOLDER LUG



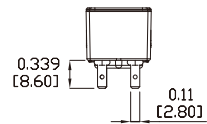
THK .031 [0.8]

### M2 Straight PC



THK .031 [0.8]

### M3 QUICK CONNECT



THK .031 [0.8]

## CONTACT MATERIAL OPTIONS

Coding	Contact Material	Terminal Plating	Rating	Agency Approvals
Q	Silver <sup>1</sup>	Silver plated <sup>1</sup>	6Amps @ 250VAC 10Amps @ 125VAC 6Amps @ 48VDC	
R	Gold <sup>2</sup>	Gold plated <sup>4</sup>	0.4VA max @ 20V max (AC or DC)	

1. Movable Contact / Terminals: Copper alloy, silver plated.

2. Movable Contact: Copper alloy with gold plated over nickel plated.

4. Terminals: Copper alloy, with gold plated over nickel plated.